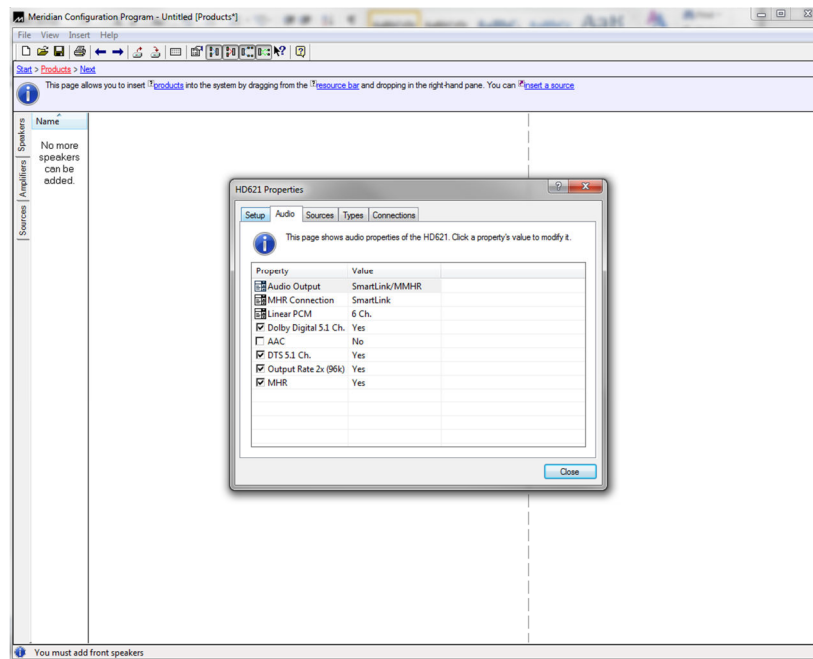


Configure a Meridian HD621 for use in a legacy system

How do I configure a Meridian HD621 Audio Processor for use in a legacy system?

You will need to use the Meridian Configuration program, configure the Meridian HD621.

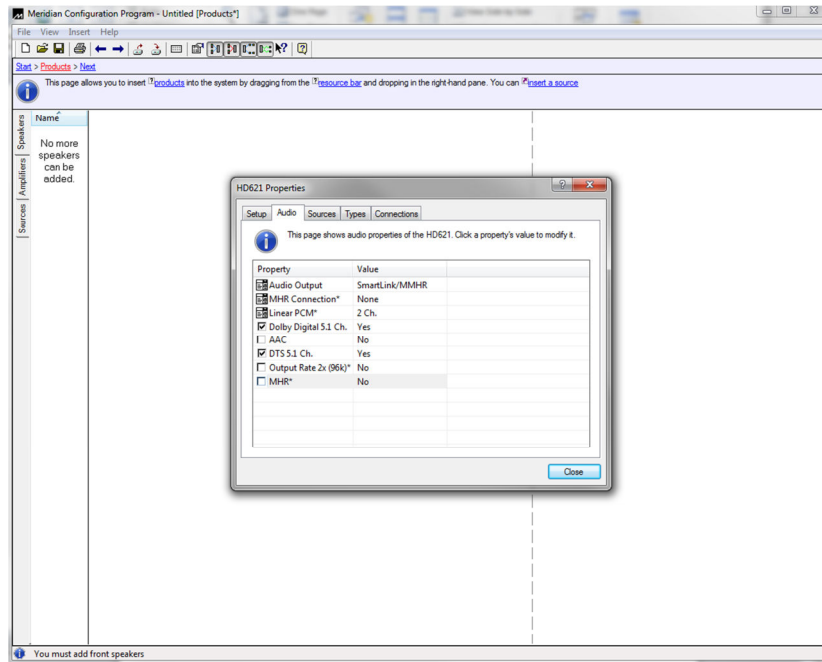
1. Connect the configuration program to the HD621 and select the 'Audio' tab. The image below shows the default values of the HD621:



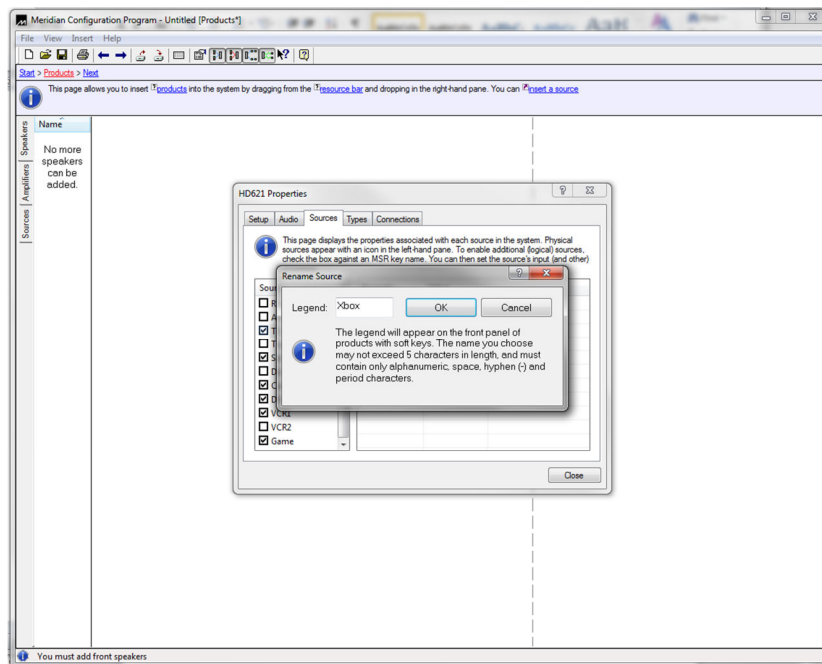
2. Some of the values in the Audio tab needs to be changed as follows:

Property	Value (Default - Multi-channel)	Value (2-channel)
Audio Output	SmartLink/MMHR	SmartLink/MMHR (no change)
MHR Connection	SmartLink	None
Linear PCM	6 Ch.	2 Ch.
Dolby Digital 5.1 Ch.	Yes	Yes
AAC	No	No (no change)
DTS 5.1 Ch.	Yes	Yes
Output Rate x2 (96k)	Yes	No
MHR	Yes	No

The Audio tab should now look as follows:



3. On the 'Sources' tab , configure the Sources as required to the appropriate HDMI input
4. If you want to rename any of the sources, select the source and right-click, rename the source





How do I connect the configured HD621 to another Meridian digital product?

Using a digital coaxial (S/PDIF) cable, connect one end from the digital output on the HD621 marked '1/2' to the required digital input on the other Meridian component.

How do I control HDMI source switching via remote control?

This is only possible if you have a Meridian component in the system that can act as a Controller. These are either certain models of DSP Loudspeaker or a Surround Controller.

- HD621 to DSP8000/DSP7200/DSP5200 requires BNC comms
- HD621 to Surround Controller requires a 5C lead

How do I connect the configured HD621 to a non-Meridian product?

Using a digital coaxial (S/PDIF) cable, connect one end from the digital output on the HD621 marked '1/2' to the required digital input on the non-Meridian component.

In this configuration is **not** possible to remotely control HDMI source switching - this is only possible by pressing the appropriate hard key on the HD621.